

5. Sketch the graph of $y = \ln|x|$, stating the coordinates of any points of intersection with the axes.

(3)



6.

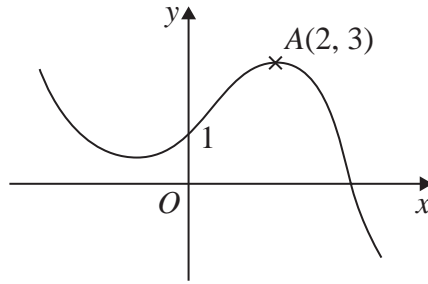


Figure 1

Figure 1 shows a sketch of the graph of $y = f(x)$.

The graph intersects the y -axis at the point $(0, 1)$ and the point $A(2, 3)$ is the maximum turning point.

Sketch, on separate axes, the graphs of

- (i) $y = f(-x) + 1$,
- (ii) $y = f(x + 2) + 3$,
- (iii) $y = 2f(2x)$.

On each sketch, show the coordinates of the point at which your graph intersects the y -axis and the coordinates of the point to which A is transformed.

(9)



Question 6 continued



