

ADVANCED SUBSIDIARY GCE

MATHEMATICS

Core Mathematics 1

QUESTION PAPER

4721

Candidates answer on the Printed Answer Book

OCR Supplied Materials:

- Printed Answer Book 4721
- List of Formulae (MF1)

Other Materials Required:

None

Monday 11 January 2010
Morning

Duration: 1 hour 30 minutes



INSTRUCTIONS TO CANDIDATES

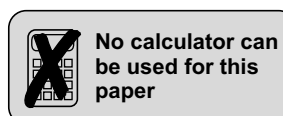
These instructions are the same on the Printed Answer Book and the Question Paper.

- Write your name clearly in capital letters, your Centre Number and Candidate Number in the spaces provided on the Printed Answer Book.
- **The questions are on the inserted Question Paper.**
- **Write your answer to each question in the space provided in the Printed Answer Book.** If you need more space for an answer use a 4-page answer book; label your answer clearly. Write your Centre Number and Candidate Number on the 4-page answer book and attach it securely to the Printed Answer Book.
- Use black ink. Pencil may be used for graphs and diagrams only.
- Read each question carefully and make sure that you know what you have to do before starting your answer.
- Answer **all** the questions.
- Do **not** write in the bar codes.
- You are **not** permitted to use a calculator in this paper.
- Give non-exact numerical answers correct to 3 significant figures unless a different degree of accuracy is specified in the question or is clearly appropriate.

INFORMATION FOR CANDIDATES

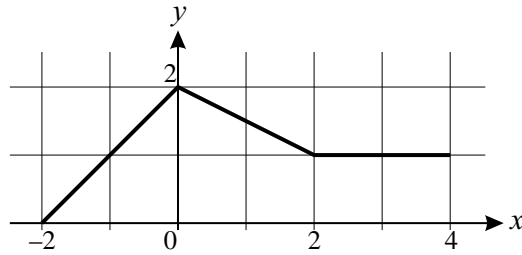
This information is the same on the Printed Answer Book and the Question Paper.

- The number of marks is given in brackets [] at the end of each question or part question on the Question Paper.
- **You are reminded of the need for clear presentation in your answers.**
- The total number of marks for this paper is **72**.
- The Printed Answer Book consists of **12** pages. The Question Paper consists of **4** pages. Any blank pages are indicated.



- 1 Express $x^2 - 12x + 1$ in the form $(x - p)^2 + q$. [3]

2



The graph of $y = f(x)$ for $-2 \leq x \leq 4$ is shown above.

- (i) Sketch the graph of $y = 2f(x)$ for $-2 \leq x \leq 4$ on the axes provided. [2]
- (ii) Describe the transformation which transforms the graph of $y = f(x)$ to the graph of $y = f(x - 1)$. [2]
- 3 Find the equation of the normal to the curve $y = x^3 - 4x^2 + 7$ at the point $(2, -1)$, giving your answer in the form $ax + by + c = 0$, where a , b and c are integers. [7]

4 Solve the equations

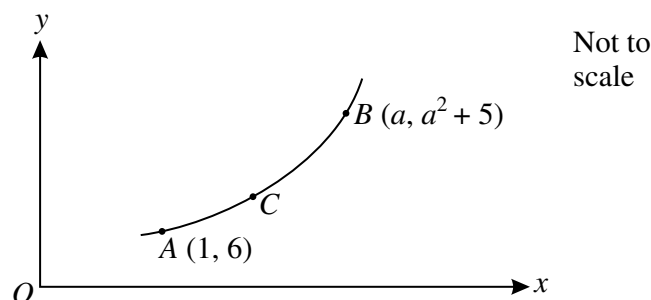
(i) $3^m = 81$, [1]

(ii) $(36p^4)^{\frac{1}{2}} = 24$, [3]

(iii) $5^n \times 5^{n+4} = 25$. [3]

- 5 Solve the equation $x - 8\sqrt{x} + 13 = 0$, giving your answers in the form $p \pm q\sqrt{r}$, where p , q and r are integers. [7]

6



The diagram shows part of the curve $y = x^2 + 5$. The point A has coordinates $(1, 6)$. The point B has coordinates $(a, a^2 + 5)$, where a is a constant greater than 1. The point C is on the curve between A and B .

- (i) Find by differentiation the value of the gradient of the curve at the point A . [2]
- (ii) The line segment joining the points A and B has gradient 2.3. Find the value of a . [4]
- (iii) State a possible value for the gradient of the line segment joining the points A and C . [1]

7

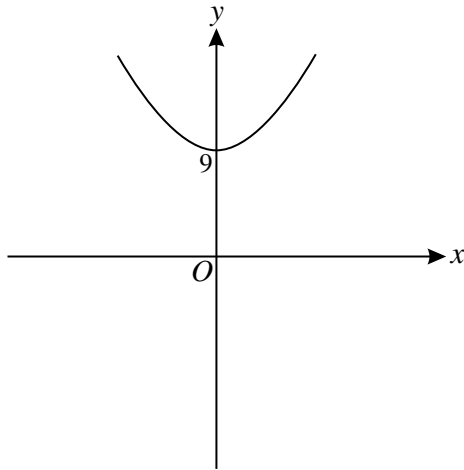


Fig. 1

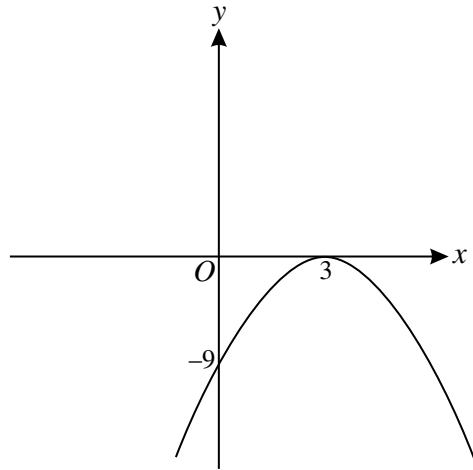


Fig. 2

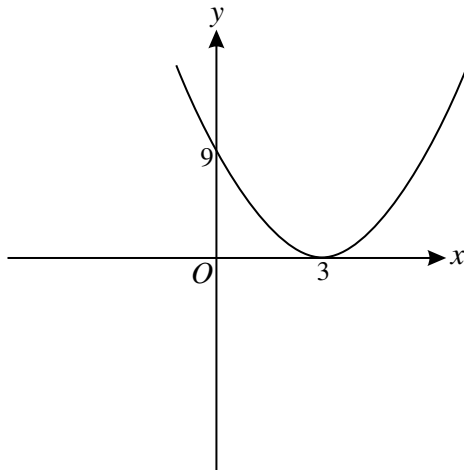


Fig. 3

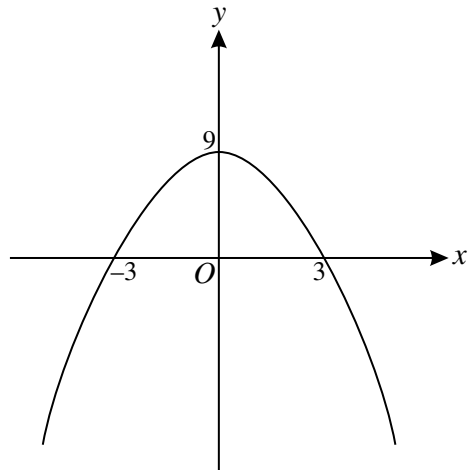


Fig. 4

(i) Each diagram shows a quadratic curve. State which diagram corresponds to the curve

(a) $y = (3 - x)^2$, [1]

(b) $y = x^2 + 9$, [1]

(c) $y = (3 - x)(x + 3)$. [1]

(ii) Give the equation of the curve which does not correspond to any of the equations in part (i). [2]

8 A circle has equation $x^2 + y^2 + 6x - 4y - 4 = 0$.

(i) Find the centre and radius of the circle. [3]

(ii) Find the coordinates of the points where the circle meets the line with equation $y = 3x + 4$. [6]

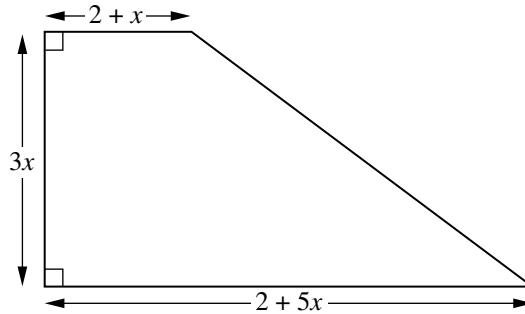
9 Given that $f(x) = \frac{1}{x} - \sqrt{x} + 3$,

(i) find $f'(x)$, [3]

(ii) find $f''(4)$. [5]

10 The quadratic equation $kx^2 - 30x + 25k = 0$ has equal roots. Find the possible values of k . [4]

11 A lawn is to be made in the shape shown below. The units are metres.



(i) The perimeter of the lawn is P m. Find P in terms of x . [2]

(ii) Show that the area, A m², of the lawn is given by $A = 9x^2 + 6x$. [2]

The perimeter of the lawn must be at least 39 m and the area of the lawn must be less than 99 m².

(iii) By writing down and solving appropriate inequalities, determine the set of possible values of x . [7]

Copyright Information

OCR is committed to seeking permission to reproduce all third-party content that it uses in its assessment materials. OCR has attempted to identify and contact all copyright holders whose work is used in this paper. To avoid the issue of disclosure of answer-related information to candidates, all copyright acknowledgements are reproduced in the OCR Copyright Acknowledgements Booklet. This is produced for each series of examinations, is given to all schools that receive assessment material and is freely available to download from our public website (www.ocr.org.uk) after the live examination series.

If OCR has unwittingly failed to correctly acknowledge or clear any third-party content in this assessment material, OCR will be happy to correct its mistake at the earliest possible opportunity.

For queries or further information please contact the Copyright Team, First Floor, 9 Hills Road, Cambridge CB2 1GE.

OCR is part of the Cambridge Assessment Group; Cambridge Assessment is the brand name of University of Cambridge Local Examinations Syndicate (UCLES), which is itself a department of the University of Cambridge.

ADVANCED SUBSIDIARY GCE

MATHEMATICS

Core Mathematics 1

4721

PRINTED ANSWER BOOK

Candidates answer on this Printed Answer Book

OCR Supplied Materials:

- Question Paper 4721 (inserted)
- List of Formulae (MF1)

Other Materials Required:

None

Monday 11 January 2010
Morning

Duration: 1 hour 30 minutes



Candidate Forename		Candidate Surname	
--------------------	--	-------------------	--

Centre Number						Candidate Number				
---------------	--	--	--	--	--	------------------	--	--	--	--

INSTRUCTIONS TO CANDIDATES

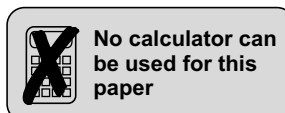
These instructions are the same on the Printed Answer Book and the Question Paper.

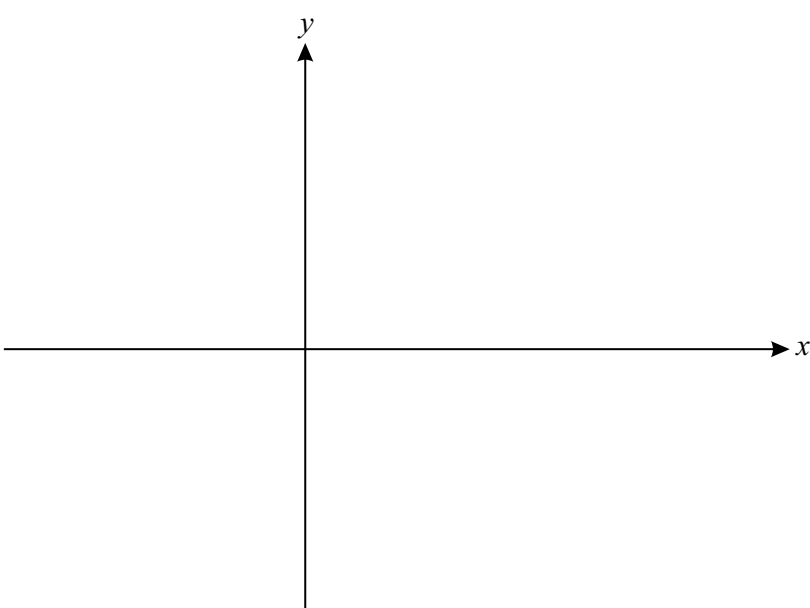
- Write your name clearly in capital letters, your Centre Number and Candidate Number in the spaces provided on the Printed Answer Book.
- **The questions are on the inserted Question Paper.**
- **Write your answer to each question in the space provided in the Printed Answer Book.** If you need more space for an answer use a 4-page answer book; label your answer clearly. Write your Centre Number and Candidate Number on the 4-page answer book and attach it securely to the Printed Answer Book.
- Use black ink. Pencil may be used for graphs and diagrams only.
- Read each question carefully and make sure that you know what you have to do before starting your answer.
- Answer **all** the questions.
- Do **not** write in the bar codes.
- You are **not** permitted to use a calculator in this paper.
- Give non-exact numerical answers correct to 3 significant figures unless a different degree of accuracy is specified in the question or is clearly appropriate.

INFORMATION FOR CANDIDATES

This information is the same on the Printed Answer Book and the Question Paper.

- The number of marks is given in brackets [] at the end of each question or part question on the Question Paper.
- **You are reminded of the need for clear presentation in your answers.**
- The total number of marks for this paper is **72**.
- The Printed Answer Book consists of **12** pages. The Question Paper consists of **4** pages. Any blank pages are indicated.



1	
2 (i)	 <p>A blank Cartesian coordinate system with a horizontal x-axis and a vertical y-axis. Both axes have arrows at their ends. The x-axis is labeled with the letter 'x' at its right end, and the y-axis is labeled with the letter 'y' at its top end. The two axes intersect at the origin.</p>
2 (ii)	
3	

3 (continued)	
4 (i)	
4 (ii)	
4 (iii)	

5	
6 (i)	

6 (ii)	
6 (iii)	
7 (i)	Equation (a) corresponds to Fig.
	Equation (b) corresponds to Fig.
	Equation (c) corresponds to Fig.
7 (ii)	

8 (i)	
8 (ii)	
9 (i)	

11 (iii)	

PLEASE DO NOT WRITE ON THIS PAGE

PLEASE DO NOT WRITE ON THIS PAGE

PLEASE DO NOT WRITE ON THIS PAGE



Copyright Information

OCR is committed to seeking permission to reproduce all third-party content that it uses in its assessment materials. OCR has attempted to identify and contact all copyright holders whose work is used in this paper. To avoid the issue of disclosure of answer-related information to candidates, all copyright acknowledgements are reproduced in the OCR Copyright Acknowledgements Booklet. This is produced for each series of examinations, is given to all schools that receive assessment material and is freely available to download from our public website (www.ocr.org.uk) after the live examination series.

If OCR has unwittingly failed to correctly acknowledge or clear any third-party content in this assessment material, OCR will be happy to correct its mistake at the earliest possible opportunity.

For queries or further information please contact the Copyright Team, First Floor, 9 Hills Road, Cambridge CB2 1GE.

OCR is part of the Cambridge Assessment Group; Cambridge Assessment is the brand name of University of Cambridge Local Examinations Syndicate (UCLES), which is itself a department of the University of Cambridge.